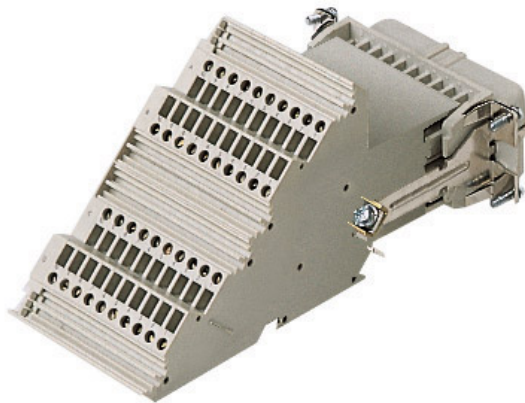


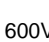






Product Sheet

Part Number: CTSF 40 R



Family	CLASS insert series
Version	with terminal block, spring terminal connection
Series	CTS
Product type	with female contacts
Type	right side mounting
Model	female insert
Reference standard	EN 61984 (2001-11)
Contact type	silver plated
No. of poles	40 poles + 
Voltage (V)	250V
Current (A)	10A (A.C./D.C.)
Wire section	0,14mm ² - 2,5mm ²
Awg size	26 - 14
Quality mark	     
IP degree of protection	degree of protection IP20 without enclosure, IP65, IP66, IP67 (EN 60529) and IP69K (DIN 40050 - 9) with enclosure

The information and the dimensions contained are not binding and may be changed without prior notice.
The drawing's dimensions are in mm.

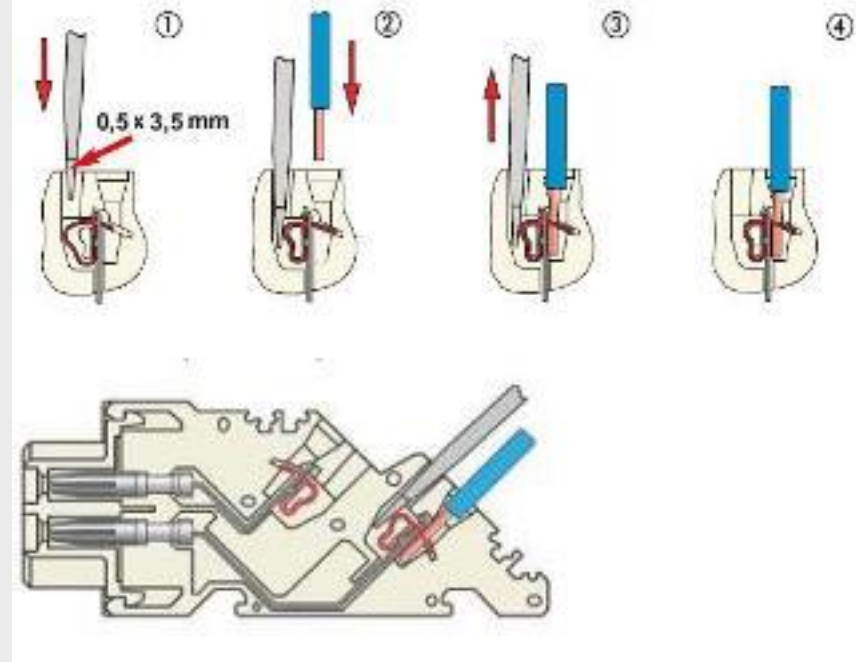
Fixing centre distance size "57.27" only bulkhead mounted housing

Impulse withstand voltage 4kV

Pollution degree 3

Notes

Spring terminal connection.
- CTSE spring inserts for section conductors:
0.14 - 2.5 mm² - AWG 26 - 14
- conductors stripping length: 9...11 mm



The information and the dimensions contained are not binding and may be changed without prior notice.
The drawing's dimensions are in mm.